

**Fire-Rated, Safety-Rated Glass**  
**Fire-Rating: 20 Minutes**

Fireglass<sup>®</sup> 20 is a 1/4" (6 mm) thick fire-rated and impact safety-rated glazing material. It is listed for use in doors with a fire rating requirement of 20 minutes.

**FEATURES**

- Fire-rated for up to 20 minutes
- Impact safety-rated—meets ANSI Z97.1 and CPSC 16 CFR1201 (Cat. I and II)
- Tempered (at least 4 times stronger than wired glass)
- Clear and wireless
- Fits in Fireframes<sup>®</sup> Designer Series from TGP, or standard fire-rated frames
- Large sizes available
- Available in an insulated glass unit (IGU) with other glass products, including (but not limited to): Tinted; Low-E; Art Glass; Reflective; One-way Mirror
- May be lightly sandblasted or etched on one side without affecting fire rating
- For use in interior and exterior applications

**Notes:** This product is not a barrier to radiant heat, as it does not meet test standards ASTM E119 or UL 263. If your jurisdiction requires a “barrier to heat” product, please contact TGP regarding Pilkington Pyrostop<sup>®</sup>.

**LISTINGS/STANDARDS**


Classified and labeled by Underwriters Laboratories, Inc.<sup>®</sup> File number for labeled 20 minute fire-rated assemblies is R13377. Tests performed in accordance with:

UL 9	NFPA 80	LARR 25798
UL 10B	NFPA 252	
UL 10C		


**MAXIMUM EXPOSED AREA**


RATING	ASSEMBLY	MAX. EXPOSED AREA	MAX. WIDTH OF EXPOSED GLAZING	OR	MAX. HEIGHT OF EXPOSED GLAZING
20 min. (WITHOUT hose stream test)	DOORS	3,204 in <sup>2</sup> / 22.25 ft <sup>2</sup> (2.07 m <sup>2</sup> )	36" (914 mm)		89" (2,261 mm)


**Note:** Individual lite sizes cannot exceed “Max. Exposed Area” shown above.  
Check with frame manufacturer for maximum tested glass sizes and required stop height.


 BIM 3D Model Available

---

 UL Classified & Labeled

 Fire-Rated

 Impact-Rated

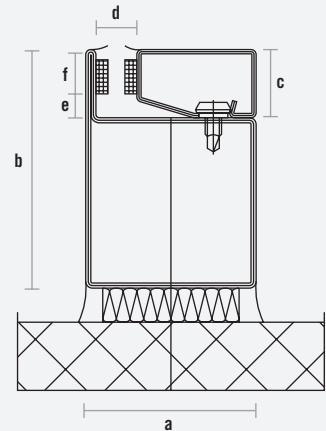
 Positive Pressure Tested

## GENERAL CHARACTERISTICS

THICKNESS:	1/4" (6 mm)
MIN. GLASS SIZE:	4-1/2" (must meet a 12" diagonal)
WEIGHT:	3 lb / ft <sup>2</sup>
APPROX. VISIBLE TRANSMISSION:	89%
APPROX. VISIBLE REFLECTION:	8%
FIRE RATING:	20 minutes (WITHOUT HOSE STREAM TEST)
IMPACT SAFETY RATING:	ANSI Z97.1 and CPSC 16CFR1201 (Cat. I and II)

### Detail based on use of Fireframes Designer Series narrow profile framing

Glazing Thickness:	1/4" (6.4 mm)
a. Frame width:	2" (51 mm)
b. Frame height:	2-3/4" (70 mm)
c. Stop height:	3/4" (19 mm)
d. Pocket width:	1/2" (12.7 mm)
e. Edge clearance:	1/4" (6.4 mm)
f. Bite:	1/2" (12.7 mm)



## LABELING

Each piece of Fireglass20 shall be permanently labeled with the appropriate marking on sizes up to 6,396 in<sup>2</sup>.

## INSTALLATION

Fireglass20 shall be glazed into the appropriate fire-rated framing with setting blocks and closed cell PVC tape.

Openings must be plumb and square. **Allow for a minimum edge clearance of 1/4" and a minimum edge coverage of 3/8"**. Inspect each piece of Fireglass20 immediately before installation and eliminate any glass with observable edge damage or face imperfections. Place setting blocks (3" minimum) at the quarter points. Check for clearance around the edges, and adjust setting blocks as needed.

## STORAGE & HANDLING

Fireglass20 must be handled with care during transportation, storage, inspection and installation. Store in a dry place.

## FAMILY OF PRODUCTS

TGP offers a complete family of products for all your fire-rated glazing needs, ranging from 20 minute to 3 hour applications.

### Fireglass®20

Fire-rated, impact safety-rated glass

### FireLite®

Fire-rated glass ceramic

### FireLite® NT

Fire-rated, impact safety-rated glass ceramic with surface-applied film

### FireLite Plus®

Fire-rated, impact safety-rated glass ceramic

### FireLite® IGU

Fire-rated or fire/impact safety-rated insulated glass units

### Pilkington Pyrostop®

Fire-rated, impact safety-rated transparent wall panels

### WireLite®

Fire-rated, wired glass

### WireLite® NT

Fire-rated, impact safety-rated wired glass with surface-applied film

### Fireframes®

Fire-rated framing & doors for use with all TGP glass products